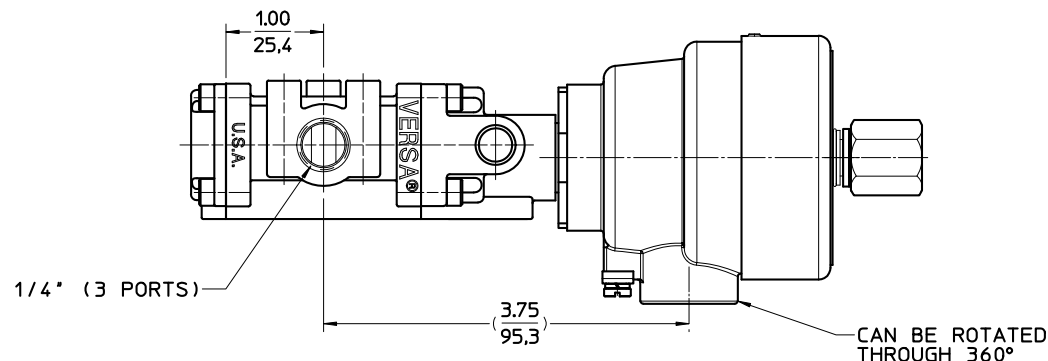


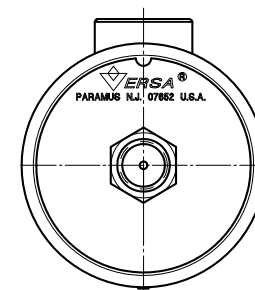
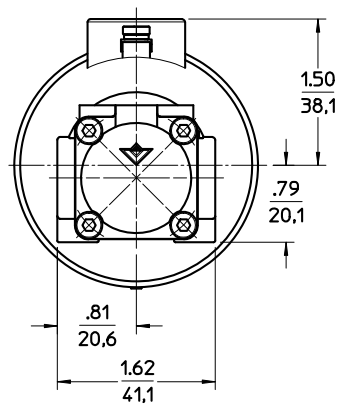
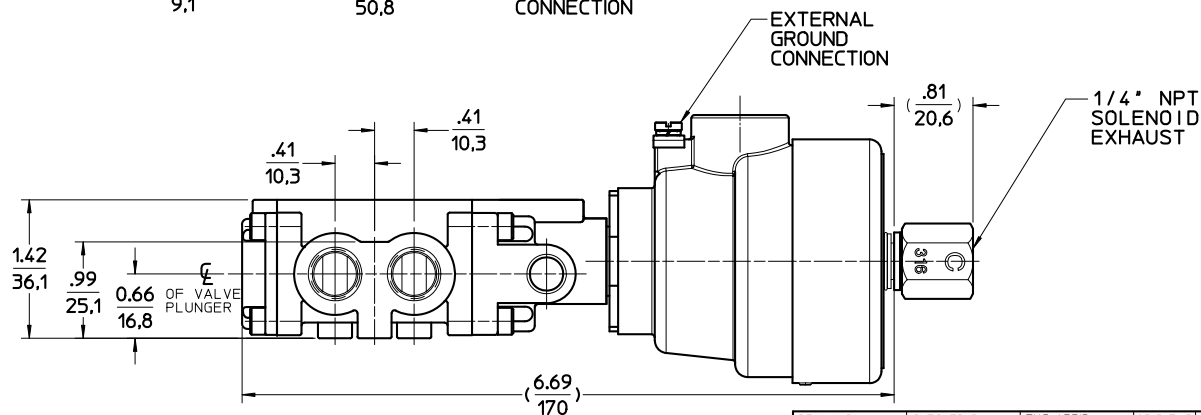
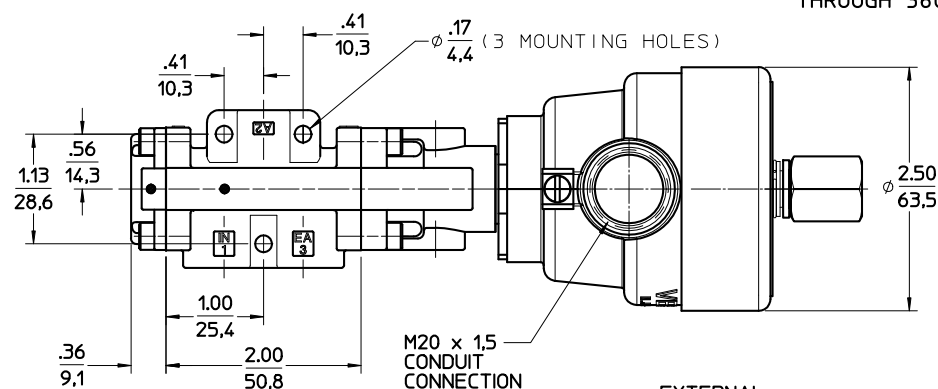
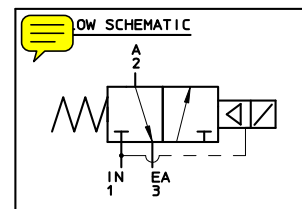
DWG. NO. CSG-3321-316
-XDBS7-VOLT




NOTE: -VOLT, SPECIFY VOLTAGE CODE
TO COMPLETE PART NUMBER.

OPERATING PRESSURES:

MIN: 25 PSIG (1,8 bar)
MAX: 150 PSIG (10,3 bar)



DRAWN BY NG 8-9-10	CHECKED BY AP 8-9-10	ENG APP'D BN 8-10-10	ORIG EWR 15612	TITLE VALVE ASSEMBLY
MATL #	SCALE .75 : 1	NEXT ASSY	DWG SIZE B	
HARDNESS #	UNLESS OTHERWISE SPECIFIED			
HEAT TREAT #	2 PLACE DECIMAL $\pm .010$ ANGULAR DIMENSIONS $\pm 1/2^\circ$			
	3 PLACE DECIMAL $\pm .003$ BREAKS & EDGES $\pm .010$			
	DIA'S ON SAME CENTER CONCENTRIC WITHIN .006 T.I.R.			
	MACHINED SURFACES, FINISHED TO 64 R.M.S. MAX.			
	DO NOT SCALE DRAWING			
BY FINAL FINISH	 VERSA PRODUCTS CO., INC. PARAMUS N.J., U.S.A. VERSA BV, NETHERLANDS			
	DWG. NO. CSG-3321-316 -XDBST-VOLT			